



## Pressure Compensating Shut-Off Gun

Models **31260**  
**31265**

### FEATURES

- Durable Nylon-Blend body and trigger provides longer life and less breakage.
- Quality construction stainless steel seat and valve assures thousands of continuous cycles.
- Unique valve design permits extended operation without operator fatigue.
- Special color coded trigger safety latch for easy identification.

**SELECTION:** Select a gun to match the system flow and pressure requirements, temperature and function being performed. These special, industrial guns are designed to minimize operator fatigue in high pressure applications.

**INSTALLATION:** If the system is a **single gun system** and the drive source will continue to run while the gun is intermittently shut-off, a pressure unloader should be installed. If **multiple guns** are in the system, either a pressure regulator or a special multiple-gun regulating unloader should be installed. In multiple gun systems, the **guns should be reasonably synchronized in flow** to avoid large amounts of by-pass from unused guns for prolonged periods. This may prematurely fatigue the pressure relief device or generate excessive heat in the by-pass mode.

### SPECIFICATIONS

	U.S. Measure	Metric Measure
<b>MODEL 31260</b>		
Maximum Flow .....	8.0 GPM	(30 L/M)
Maximum Pressure.....	5100 PSI	(350 BAR)

<b>MODEL 31265</b>		
Maximum Flow .....	13 GPM	(50 L/M)
Maximum Pressure.....	3650 PSI	(250 BAR)

### COMMON SPECIFICATIONS

Maximum Temperature.....	320°F	(160°C)
Inlet Port.....	3/8" NPTF	(3/8" NPTF)
Discharge Port .....	1/4" NPTF	(1/4" NPTF)
Weight.....	23.3 oz.	(0.66 kg)
Dimensions .....	7.50 x 7.25 x 1.25"	(190 x 184 x 31.8 mm)

Gun is stamped with a European safety pressure. Use only at above specifications to assure proper gun life and performance.

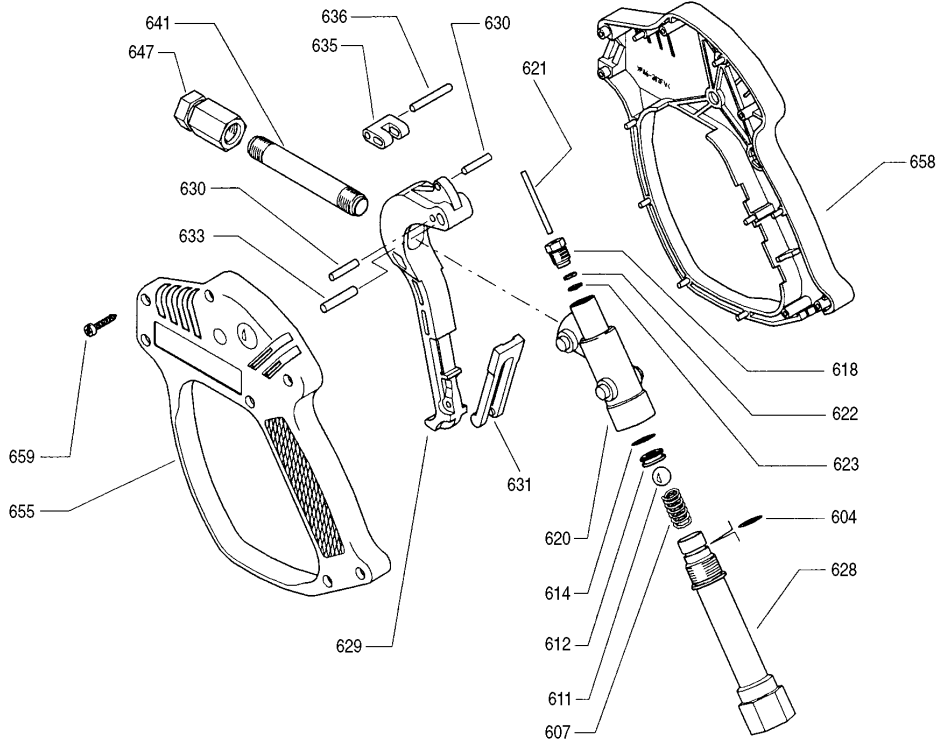
**OPERATION:** Flow through the gun occurs by squeezing the trigger on the gun. This activates the actuator rod, lifting the ball off the seat, allowing the pumped liquid to flow through the valve body chamber in the gun. A special double linkage provides increased mechanical advantage for ease of operation. Releasing the trigger shuts off the flow.

A special safety latch locks the gun closed to prevent unintentional operation when left unattended. This latch is blue on the weep version.

For safety and protection of the pump and system, a pressure relief device must be used with a high pressure gun. When the gun is shut off, pressure spikes could result in severe damage to the pump or other components in the system without this device. Carefully examine the functioning of the system to determine the best type of relief valve to be used.

*“Customer confidence is our greatest asset”*

## EXPLODED VIEW



## PARTS LIST

ITEM	31260 P/N	31265 P/N	MATL	DESCRIPTION	QTY	ITEM	31260 P/N	31265 P/N	MATL	DESCRIPTION	QTY
604	33564	33564	NBR	O-Ring, Inlet Fitting - 90D	1	633	—	—	S	Pin, Trigger (M5x33)	1
607	31012	31012	S	Spring	1	635	—	—	NY	Collar, Trigger	1
611	32289	31075	SSSS	Ball	1	636	—	—	S	Pin, Trigger (M4x29)	1
612	31204	31102	SS	Seat	1	641	31089	31089	S	Tube, Discharge	1
614	—	—	NBR	O-Ring, Seat - 85D	1	647	31090	31091	BB	Fitting, Discharge (1/4" NPTF)	1
618	31001	31001	BB	Guide, Rod	1	655	—	—	NY	Handle, Left, Blue	1
620	—	—	BB	Body	1	658	—	—	NY	Handle, Right, Blue	1
621	31032	31032	S	Rod, Actuator	1	659	—	—	STZP	Screw, Self-Threading (M3.5x18)	7
622	35074	35074	PTFE	Back-up-Ring, Rod	1	665	31852	31833	NY	Handle, Assy (Incls: 655, 658, 659)	1
623	35020	35020	FPM	O-Ring, Rod	1	667	31818	31817	NY	Trigger, Assy (Incls: 629, 630, 631, 633, 635, 636)	1
628	31015	31015	BB	Fitting, Inlet (3/8" NPTF)	1	668	31240	31236	NBR	Repair Kit (Incls: 604, 611, 612, 614, 621, 622, 623)	1
629	—	—	NY	Trigger, Black	1						
630	—	—	S	Pin, Trigger (M4x20)	2						
631	—	N/A	NY	Lever, Safety, Red	1						
	N/A	—	NY	Lever, Safety, Yellow	1						

*Italics are optional items.*

MATERIAL CODES (Not Part of Part Number): BB=Brass FPM=Fluorocarbon NBR=Medium Nitrile (Buna-N)  
 NY=Nylon PTFE=Pure Polytetrafluoroethylene S=304SS SS=316SS SSSS=440SS STZP=Steel/Zinc Plated

## TROUBLESHOOTING

Water leaking out the discharge of the gun	<ul style="list-style-type: none"> <li>Object lodged between the seat and ball.</li> <li>Seat pitted or worn.</li> <li>O-Ring on seat worn or cut.</li> </ul>
Water leaking out the trigger area	<ul style="list-style-type: none"> <li>O-Ring on actuator rod worn or cut.</li> </ul>
Water leaking out back of gun	<ul style="list-style-type: none"> <li>O-Ring on rear plug worn or cut.</li> </ul>

## ⚠ WARNING

Severe injury can occur with high pressure spray.  
 Do not allow spray to contact any part of body.

## WARRANTY

### 90 Day Warranty

Refer to complete CAT PUMPS Warranty for further information.

Products described hereon are covered by one or more of the following U.S. patents 3558244, 3652188, 3809508, 3920356, 3930756 and 5035580

**World Headquarters**  
**CAT PUMPS**  
 1681 - 94th Lane N.E. Minneapolis, MN 55449-4324  
 Phone (763) 780-5440 — FAX (763) 780-2958  
 e-mail: techsupport@catpumps.com  
 www.catpumps.com

### International Inquiries

FAX (763) 785-4329  
 e-mail: intl@catpumps.com



**CAT PUMPS (U.K.) LTD.**  
 1 Fleet Business Park, Sandy Lane, Church Crookham  
 FLEET, Hampshire, GU52 8BF, England  
 Phone Fleet 44 1252-622031 — Fax 44 1252-626655  
 e-mail: sales@catpumps.co.uk

**N.V. CAT PUMPS INTERNATIONAL S.A.**  
 Heiveldekens 6A, B-2550 Kontich, Belgium  
 Phone 32-3-450.71.50 — Fax 32-3-450.71.51  
 e-mail: cpi@catpumps.be www.catpumps.be

**CAT PUMPS DEUTSCHLAND GmbH**  
 Buchwiese 2, D-65510 Idstein, Germany  
 Phone 49 6126-9303 0 — Fax 49 6126-9303 33  
 e-mail: catpumps@t-online.de www.catpumps.de