



Stainless Steel Pressure Compensating Shut-Off Gun

33600

FEATURES

- Durable Z-Nylon body with new heat resistant trigger provides longer life and less breakage.
- Quality construction stainless steel tapered seat and valve assures thousands of continuous cycles.
- Unique valve design with internal balanced pressure and ergonomic trigger design permits easy on and off operation.

SELECTION: A gun should be selected to match the system flow and pressure requirements, temperature and function being performed. This special industrial gun is designed to minimize operator fatigue in high pressure applications.

INSTALLATION: If the system is a **single gun system** and the drive source will continue to run while the gun is intermittently shut-off, a pressure unloader should be installed. If **multiple guns** are in the system, either a pressure regulator or a special multiple-gun regulating unloader should be installed. In multiple gun systems, the guns should be reasonably synchronized in flow to avoid large amounts of by-pass from unused guns for prolonged periods. This may prematurely fatigue the pressure relief device or generate excessive heat in the by-pass mode.

OPERATION: Flow through the gun occurs by squeezing the trigger on the gun. This activates the actuator rod, relieving the pressure on the spring and permitting the

SPECIFICATIONS

| | U.S. Measure | Metric Measure |
|--------------------------|-----------------|-----------------|
| Maximum Flow..... | 10.5 GPM | (40 L/M) |
| Maximum Pressure | 5800 PSI | (400 BAR) |
| Maximum Temperature..... | 320°F | (160°C) |
| Inlet Port..... | 3/8" NPTF | (3/8" NPTF) |
| Outlet Port..... | 1/4" NPTF | (1/4" NPTF) |
| Weight..... | 19.6 oz. | (0.557 kg) |
| Dimensions | 8.25x5.38x1.25" | (210x137x32 mm) |

Gun is stamped with a European safety pressure. Use only at above specifications to assure proper gun life and performance.

valve to ease off the seat. The unique tapered design of the valve and seat permits a smooth, balanced internal pressure, minimizing tension on the trigger. Releasing the trigger shuts off the flow by forcing the actuator rod to close the seat and valve.

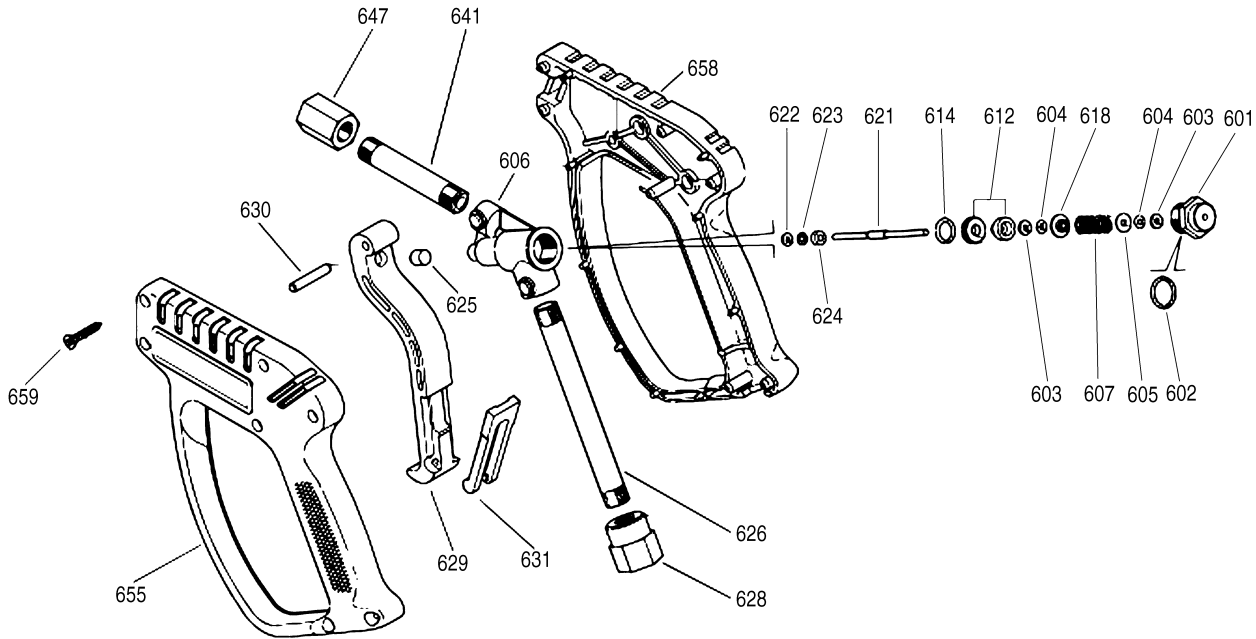
For safety and protection of the pump and system, a pressure relief device must be used with a high pressure gun. When the gun is shut off, pressure spikes could result in severe damage to the pump or other components in the system without this device. Carefully examine the functioning of the system to determine the best type of relief valve to be used.

⚠ WARNING

**Severe injury can occur with high pressure spray.
Do not allow spray to contact any part of body.**

“Customer confidence is our greatest asset”

EXPLODED VIEW



PARTS LIST

| ITEM | P/N | MATL | DESCRIPTION | QTY | ITEM | P/N | MATL | DESCRIPTION | QTY |
|------|-------|------|---------------------------|-----|-------|-------|---|---|-----|
| 601 | 39844 | S | Plug (M16) | 1 | 630 | — | BB | Pin, Trigger | 1 |
| 602 | — | NBR | O-Ring, Plug | 1 | 631 | — | NY | Latch, Safety | 1 |
| 603 | 35074 | PTFE | Back-up-Ring, Plug | 2 | 641 | — | S | Pipe, Discharge (1/4" NPT) | 1 |
| 604 | 35020 | FPM | O-Ring, Plug | 2 | 647 | 39040 | SSS | Fitting, Discharge (1/4" NPT) | 1 |
| 605 | 39058 | S | Washer, Seal | 1 | 655 | — | Z | Handle, Left Half, RED | 1 |
| 606 | — | S | Housing | 1 | 658 | — | Z | Handle, Right Half, RED | 1 |
| 607 | 39045 | SS | Spring, Valve | 1 | 659 | — | STZP | Screw, Self Threading (M3.5x18) | 7 |
| 612 | 32897 | SS | Valve, Seat | 1 | 665 | 39028 | Z | Assembly, Handle, RED , Prior to 9/97 (Incls: 655,658,659) | 1 |
| 614 | — | FPM | O-Ring, Seat - 85D | 1 | 667 | 39029 | PET | Assembly, Trigger, BLACK , Prior to 9/97 (Incls: 625,629,630,631) | 1 |
| 618 | 39059 | S | Retainer, Spring | 1 | 39629 | PET | Assembly, Trigger, BLACK , After to 9/97 (Incls: 625,629,630,631) | 1 | |
| 621 | 39856 | SSS | Rod, Actuator | 1 | 668 | 32860 | — | Kit, Gun Repair, Prior to 9/97 (Incls: 603,604,612,614,621,622,623) | 1 |
| 622 | 35074 | PTFE | Back-up-Ring, Rod | 1 | 39860 | — | — | Kit, Gun Repair, After 9/97 (Incls: 602,603,604,612,614,621,622,623) | 1 |
| 623 | 35020 | FPM | O-Ring, Rod | 1 | | | | | |
| 624 | 39004 | SS | Washer, Actuator Rod | 1 | | | | | |
| 625 | — | D | Striker | 1 | | | | | |
| 626 | — | SS | Pipe, Inlet (3/8" NPT) | 1 | | | | | |
| 628 | 39837 | SSS | Fitting, Inlet (3/8" NPT) | 1 | | | | | |
| 629 | — | PET | Trigger | 1 | | | | | |

Italics are optional items.

MATERIAL CODES (Not Part of Part Number): BB=Brass D=Acetal FPM=Fluorocarbon NY=Nylon PET=Poly (Ethylene Terephthalate)
PTFE=Pure Polytetrafluoroethylene S=304SS SS=316SS SSS=416SS STZP=Steel/Zinc Plated Z=Z-Nylon

TROUBLESHOOTING

- | | |
|--|---|
| <p>Water leaking out the discharge of the gun</p> <p>Water leaking out the trigger area</p> <p>Water leaking out back of gun</p> | <ul style="list-style-type: none"> ● Object lodged between the seat and ball. ● Valve or seat pitted or worn. ● O-Ring on seat worn or cut. ● O-Ring on actuator rod worn or cut. ● O-Ring on rear plug worn or cut. |
|--|---|

WARRANTY

90 Day Warranty

Refer to complete CAT PUMPS Warranty for further information.

Products described hereon are covered by one or more of the following U.S. patents 3558244, 3652188, 3809508, 3920356, 3930756 and 5035580

World Headquarters
CAT PUMPS
 1681 - 94th Lane N.E. Minneapolis, MN 55449-4324
 Phone (763) 780-5440 — FAX (763) 780-2958
 e-mail: sales@catpumps.com
 www.catpumps.com

International Inquiries
 FAX (763) 785-4329
 e-mail: intlsales@catpumps.com



CAT PUMPS (U.K.) LTD.
 1 Fleet Business Park, Sandy Lane, Church Crookham, Fleet
 Hampshire GU52 8BF, England
 Phone Fleet 44 1252-622031 — Fax 44 1252-626655
 e-mail: sales@catpumps.co.uk

N.V. CAT PUMPS INTERNATIONAL S.A.
 Heiveldekens 6A, 2550 Kontich, Belgium
 Phone 32-3-450.71.50 — Fax 32-3-450.71.51
 e-mail: cpi@catpumps.be www.catpumps.be
CAT PUMPS DEUTSCHLAND GmbH
 Buchwiese 2, D-65510 Idstein, Germany
 Phone 49 6126-9303 0 — Fax 49 6126-9303 33
 e-mail: catpumps@t-online.de www.catpumps.de