



## High Pressure Shut-off Gun



**Gun Only Model**

**39410**

**Gun with Lance Models**

**39411**

**39412**

### FEATURES

- Unique valve design permits a gradual pull on the trigger for gradual build up of pressure.
- Contour design with fully adjustable front grip provides comfort and safety.
- Special safety-lock prevents unintentional operation.
- Stainless steel internal parts and forged inlet housing for durability.

**SELECTION:** Select a gun to match your system flow and pressure requirements, temperature and function being performed.

**INSTALLATION:** Install the appropriate regulating device when using a shut-off gun to avoid pressure spikes when the gun is shut off. Severe damage may occur to your system without this device.

### SPECIFICATIONS

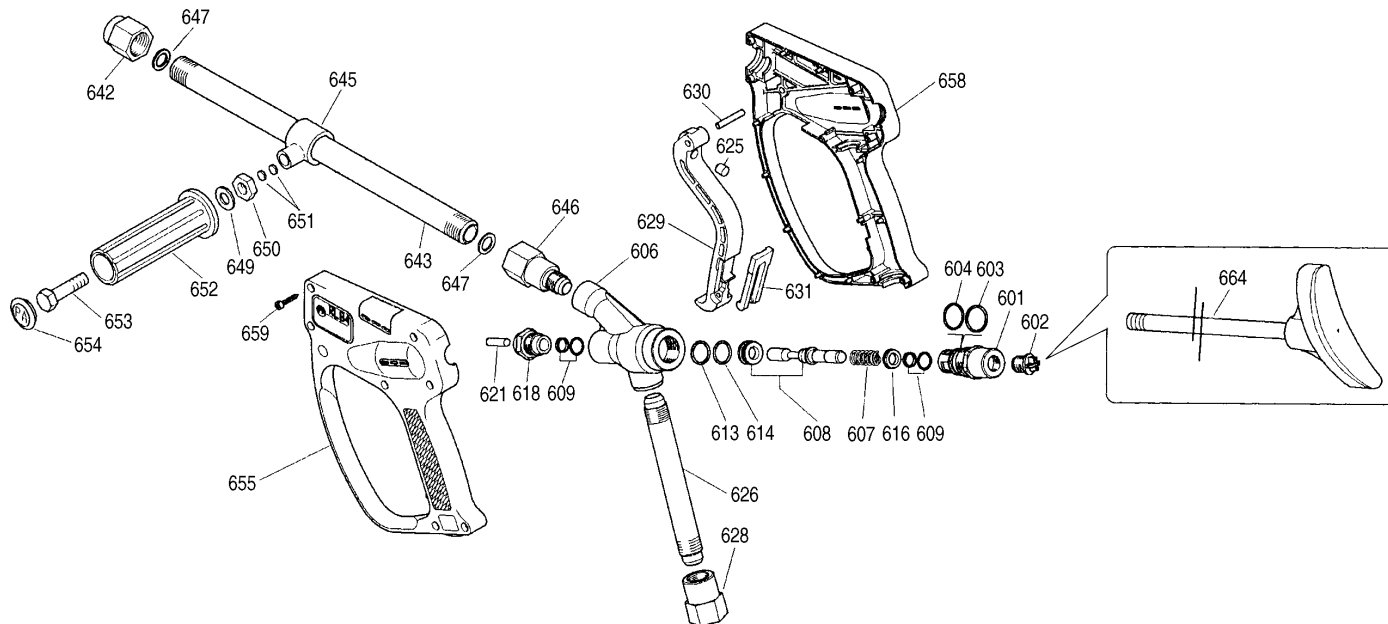
	U.S. Measure	Metric Measure
Maximum Flow .....	21 GPM	(79 L/M)
Maximum Pressure .....	7250 PSI	(500 BAR)
Maximum Temperature .....	212°F	(100°C)
Inlet Fitting .....	1/2" BSPF	(1/2" BSPF)
Outlet Fitting (Gun) .....	1/2" BSPF	(1/2" BSPF)
Outlet Fitting (Lance) .....	1/4" NPTF	(1/4" NPTF)
Weight (Gun) .....	3.2 lbs.	(1.45 kg)
Weight (with Lance)		
39411 .....	5.9 lbs.	(2.68 kg)
39412 .....	7.6 lbs.	(3.45 kg)
Dimensions (Gun) .....	8.62 x 8.50 x 1.50"	(219 x 216 x 38 mm)
Dimensions (with Lance)		
39411 .....	8.5" x 24.0"	(216 x 610 mm)
39412 .....	8.5" x 40.0"	(216 x 1010 mm)

Gun is stamped with a European safety pressure. Use only at above specifications to assure proper gun life and performance.

**OPERATION:** Flow through the gun occurs by squeezing the trigger on the gun. Because of the unique valve design, a gradual pull on the trigger will permit a gradual build-up of pressure up to 7250 PSI. Squeezing the trigger lifts the piston off the seat and allows flow through the flow ports around the perimeter of the seat.

*“Customer confidence is our greatest asset”*

## EXPLODED VIEW



## PARTS LIST

ITEM	P/N	MATL	DESCRIPTION	QTY	ITEM	P/N	MATL	DESCRIPTION	QTY
601	39405	BB	Plug, Spring	1	646	39423	S	Fitting, Discharge (1/2" BSPF)	1
602	—	NY	Plug, Rear	1	647	39003	CU	Gasket, Compression	2
603	—	PTFE	Back-up-Ring, Plug	1	649	—	STZP	Washer (M10)	1
604	—	NBR	O-Ring, Plug - 85D	1	650	—	STZP	Nut (M10)	1
606	—	BB	Body	1	651	32869	CU	Plug	2
607	39409	S	Spring, Piston	1	652	—	NY	Grip	1
608	39425	S	Seat, Piston 2pc Set	1	653	—	STZP	Screw (M10x35)	1
609	—	NBR	Seal, Piston w/O-Ring	2	654	—	NY	Plug, Grip	1
613	—	PTFE	Back-up-Ring, Seat	1	655	—	NY	Handle, Left Half	1
614	—	FPM	O-Ring, Seat	1	658	—	NY	Handle, Right Half	1
616	—	BB	Washer	1	659	—	S	Screw, Self Threading (M3.5x18)	7
618	39408	BB	Retainer, Piston	1	663	31069	—	Assy, Grip (Incls: 645, 649, 650, 651, 652, 653, 654)	1
621	39417	BB	Rod, Actuator	1	664	39414	—	Shoulder Support	1
625	—	S	Striker	1	665	39418	NY	Assy, Handle (Incls: 655, 658, 659)	1
626	39407	S	Pipe, Inlet	1	666	32437	S	Assy, Lance/Grip, 16" (400 mm) (Incls: 642, 643, 645, 647, 649, 650, 651, 652, 653, 654)	1
628	39419	S	Fitting, Inlet (1/2" BSPF)	2					
629	—	NY	Trigger (Black)	1					
630	—	BB	Pin, Trigger	1					
631	—	NY	Latch, Safety (Red)	1					
642	32817	S	Holder, Nozzle (1/4")	1	667	31839	—	Assy, Trigger, Black (Incls: 625, 629, 630, 631)	1
643	33947	S	Lance, 16" (400 mm) (39411)	1	668	31837	NBR*	Kit, Gun Repair (Incls: 603, 604, 607, 608, 609, 613, 614, 616, 621)	1
	33948	S	Lance, 32" (800 mm) (39412)	1	669	31836	NBR*	Kit, O-Ring (Incls: 603, 604, 609, 613, 614)	1
645	—	STCP	Yoke	1					

*Italics are optional items. \*Review material codes for individual parts (FPM O-Ring is used). MATERIAL CODES (Not Part of Part Number): BB=Brass CU=Copper FPM=Fluorocarbon NBR=Medium Nitrile (Buna-N) NY=Nylon PTFE=Pure Polytetrafluoroethylene S=304SS STCP=Steel/Chrome Plated STZP=Steel/Zinc Plated*

## TROUBLESHOOTING

Liquid leaking from discharge of gun

- Foreign material lodged between piston and seat.
- Clean, examine parts for any damage and replace as needed.

Liquid leaking from trigger area

- Piston or seat pitted or worn. Replace as needed.
- Examine O-ring and back-up-ring on seat and replace as needed.
- Examine O-ring and back-up-ring on piston and replace as needed.
- Examine washer for seat and replace as needed.

Liquid leaking from rear of gun or plug, loss of pressure

- Examine O-ring and back-up-ring on piston and replace as needed.
- Check nozzle for foreign material lodged in nozzle or worn nozzle and replace as needed.

## ⚠ WARNING

**Severe injury can occur with high pressure spray. Do not allow spray to contact any part of body.**

## WARRANTY

### 90 Day Warranty

Refer to complete CAT PUMPS Warranty for further information.

Products described hereon are covered by one or more of the following U.S. patents 3558244, 3652188, 3809508, 3920356, 3930756 and 5035580

## World Headquarters

### CAT PUMPS

1681 - 94th Lane N.E. Minneapolis, MN 55449-4324

Phone (763) 780-5440 — FAX (763) 780-2958

e-mail: techsupport@catpumps.com  
www.catpumps.com

## International Inquiries

FAX (763) 785-4329

e-mail: intlsales@catpumps.com



The Pumps with Nine Lives

## CAT PUMPS (U.K.) LTD.

1 Fleet Business Park, Sandy Lane, Church Crookham  
FLEET, Hampshire, GU52 8BF, England  
Phone Fleet 44 1252-622031 — Fax 44 1252-626655  
e-mail: sales@catpumps.co.uk

## N.V. CAT PUMPS INTERNATIONAL S.A.

Heiveldkens 6A, B-2550 Kontich, Belgium  
Phone 32-3-450.71.50 — Fax 32-3-450.71.51  
e-mail: cpi@catpumps.be www.catpumps.be

## CAT PUMPS DEUTSCHLAND GmbH

Buchwiese 2, D-65510 Idstein, Germany  
Phone 49 6126-9303 0 — Fax 49 6126-9303 33  
e-mail: catpumps@t-online.de www.catpumps.de