



High Pressure Relief Valve

Model

7196

FEATURES

- Provides system pressure setting and protection for single or multiple gun and pump systems.
- Lightweight, compact design quickly and conveniently mounts directly into discharge line.
- Provides back-up protection to assure complete pressure relief for maximum pump and system protection.

SPECIFICATIONS

	U.S. Measure	Metric Measure
Flow Range.....	1-21 GPM	(3.8 to 80 L/M)
Pressure Range	100-7250 PSI	(7 to 500 BAR)
Maximum Temperature	195°F	(90°C)
Inlet Port	1/2" BSPF	(1/2" BSPF)
By-Pass Port.....	3/8" BSPF	(3/8" BSPF)
Weight	3.12 lbs.	(1.42 kg)
Dimensions.....	8.74 x 1.96 x 1.54"	(222 x 50 x 39 mm)

Relief valve is stamped with a European safety pressure. Use only at above specifications to assure proper relief valve life and performance.

SELECTION: Select a Relief Valve to meet or exceed the flow and pressure requirements of the system.

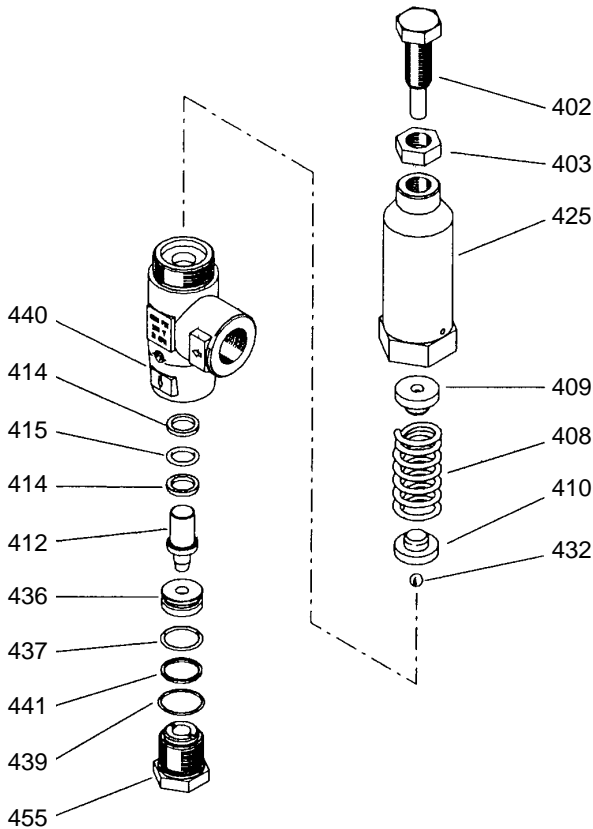
INSTALLATION: The Relief Valve should be mounted on the discharge manifold or in the discharge line **before any other accessories in the system** to provide optimum protection to the pump. The Relief Valve should be teed into the discharge manifold or discharge line. The by-pass connection is at the bottom. Relief Valve by-pass liquid may be returned to reservoir or drain to the floor. By-pass continued on back

⚠ WARNING

All systems require both a primary pressure regulating device (i.e., regulator, unloader) and a secondary pressure safety relief device (i.e., pop-off valve, safety valve). Failure to install such relief devices could result in personal injury or damage to the pump or to system components. CAT PUMPS does not assume any liability or responsibility for the operation of a customer's high pressure system.

“Customer confidence is our greatest asset”

EXPLODED VIEW



PARTS LIST

ITEM	P/N	MATL	DESCRIPTION	QTY
402	33833	SS	Adjuster, Pressure	1
403	33823	SS	Nut, Lock (M14x2)	1
408	33804	STL	Spring	1
409	33815	BB	Retainer, Spring (Upper)	1
410	33814	BB	Retainer, Spring (Lower)	1
412	33816	SS	Piston	1
414	—	PTFE	Back-up-Ring, Piston	2
415	—	NBR	O-Ring, Piston	1
425	—	BB	Housing, Spring	1
432	33825	SS	Ball	1
436	33826	SS	Seat	1
437	—	NBR	O-Ring, Seat	1
439	—	NBR	O-Ring, By-Pass Fitting	1
440	—	BB	Body	1
441	—	PTFE	Back-up-Ring, By-Pass Fitting	1
455	33829	BB	Fitting, By-Pass (3/8 BSP)	1
468	33840	NBR	Kit, O-Ring	1

Italics are optional items.

MATERIAL CODES (Not Part of Part Number):

BB=Brass NBR=Medium Nitrile (Buna-N)

PTFE=Pure Polytetrafluoroethylene SS=316SS STL=Steel

Products described hereon are covered by one or more of the following U.S. patents 3558244, 3652188, 3809508, 3920356, 3930756 and 5035580

World Headquarters

CAT PUMPS

1681 - 94th Lane N.E. Minneapolis, MN 55449-4324

Phone (763) 780-5440 — FAX (763) 780-2958

e-mail: sales@catpumps.com

www.catpumps.com

International Inquiries

FAX (763) 785-4329

e-mail: intlsales@catpumps.com



The Pumps with Nine Lives

CAT PUMPS (U.K.) LTD.

1 Fleet Business Park, Sandy Lane, Church Crookham, Fleet

Hampshire GU52 8BF, England

Phone Fleet 44 1252-622031 — Fax 44 1252-626655

e-mail: sales@catpumps.co.uk

N.V. CAT PUMPS INTERNATIONAL S.A.

Heiveldekens 6A, 2550 Kontich, Belgium

Phone 32-3-450.71.50 — Fax 32-3-450.71.51

e-mail: cpi@catpumps.be www.catpumps.be

CAT PUMPS DEUTSCHLAND GmbH

Buchwiese 2, D-65510 Idstein, Germany

Phone 49 6126-9303 0 — Fax 49 6126-9303 33

e-mail: catpumps@t-online.de www.catpumps.de

returned to the inlet of the pump should be done with caution to avoid pressure spikes or excessive heat build-up from recirculating liquids. The standard inlet connection is at the side.

OPERATION: The pressure adjusting screw is located at the top of the Relief Valve. Using a wrench, the pressure setting may be **increased** by turning **clockwise** or **decreased** by turning **counterclockwise**.

The Relief Valve should be set in **small** increments. Check your pressure gauge following each adjustment. It may be convenient to **set your unloader or regulating device** for the system working pressure in **small** increments, as you are setting the Relief Valve. The final adjustment for the Relief Valve should be set to relieve at approximately **200 PSI above the system working pressure**.

REMEMBER, THE RELIEF VALVE IS A SECONDARY SAFETY DEVICE. IT DOES NOT REPLACE A PRESSURE REGULATOR OR UNLOADER.

TROUBLESHOOTING

Valve chatters	• Valve is improperly set. Repeat adjustment procedure.
Valve continually by-passes	• Seat or piston valve is worn. Replace as needed.
Leaking out the top of valve	• O-Ring on piston worn or cut. Replace as needed.

WARRANTY

90 Day Warranty

Refer to complete CAT PUMPS Warranty for further information.